

PROJECT	DESIGNATION NO.
1703013	1703013
CONTRACT	BRIDGE FILE
B-4892	FRANKLIN COUNTY BRIDGE 31

# INDIANA DEPARTMENT OF TRANSPORTATION



## BRIDGE PLANS

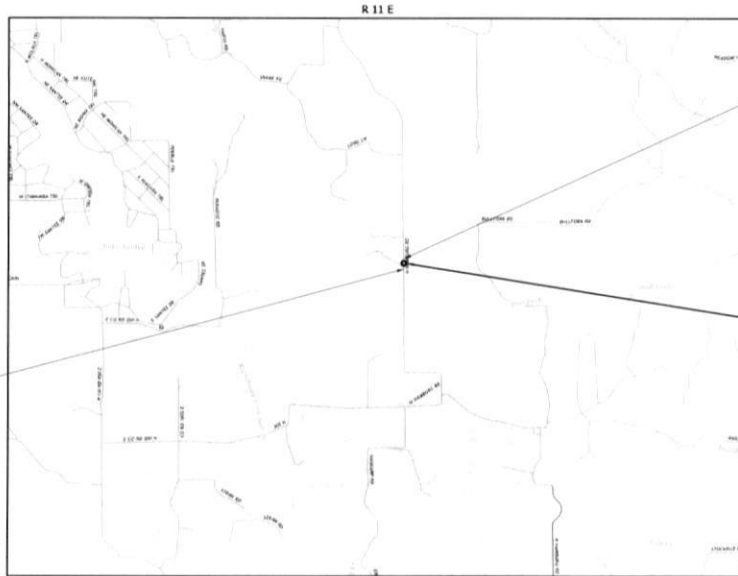
FOR SPANS OVER 20 FEET

ON

NORTH HAMBURG ROAD OVER BULL FORK SALT CREEK

PROJECT NO. 1703013 P.E.  
1703013 R/W  
1703013 CONST.

Bridge Replacement on N. Hamburg Road over Bull Fork Salt Creek  
Located 2.9 miles South of Stipps Hill Road  
in Section 14, T11N, R11E, Salt Creek Township, Franklin County, Indiana.



LOCATION MAP

TRAFFIC DATA		
A.A.D.T. (2024)	360	V.P.D.
A.A.D.T. (2044)	380	V.P.D.
D.H.V. (2044)	499	V.P.H.
DIRECTIONAL DISTRIBUTION		50 %
TRUCKS		11 % D.H.V. 40 % A.A.D.T.
DESIGN DATA		
DESIGN SPEED		35 MPH
PROJECT DESIGN CRITERIA		3R (Non-Freeway)
FUNCTIONAL CLASSIFICATION		Rural - Major Collector
RURAL/URBAN		Rural
TERRAIN		Rolling
ACCESS CONTROL		None



PROJECT LOCATION SHOWN BY  
FRANKLIN COUNTY, INDIANA

LATITUDE: 39°23'55.18" N    LONGITUDE: 85°16'6.6" W

BRIDGE LENGTH = 0.032 mi.  
ROAD LENGTH = 0.161 mi.  
TOTAL LENGTH = 0.193 mi.  
MAX. GRADE = -14.01%

HUC: 050800030503

STAGE 2 PLANS 11-29-2021

INDIANA DEPARTMENT OF TRANSPORTATION  
STANDARD SPECIFICATIONS DATED 2022  
TO BE USED WITH THESE PLANS

STRUCTURE INFORMATION				
STRUCTURE	TYPE	SPAN AND SKEW	OVER	STATION
FRANKLIN COUNTY BRIDGE 31	CONTINUOUS COMPOSITE PRESTRESSED CONCRETE I-BEAM, TYPE II	3 Spans: 53'-3", 62'-0", 53'-3" 30°00'00" SKEW RT.	BULL FORK SALT Creek	24+90.00 "PR-A"

APPROVED BY: \_\_\_\_\_ DATE: \_\_\_\_\_

\_\_\_\_\_  
LARRY SMITH- FRANKLIN COUNTY HIGHWAY SUPERVISOR &  
EMPLOYEE IN RESPONSIBLE CHARGE (ERC)

APPROVED BY  
FRANKLIN COUNTY BOARD OF COMMISSIONERS

\_\_\_\_\_  
\_\_\_\_\_  
\_\_\_\_\_

ATTEST \_\_\_\_\_ DATE \_\_\_\_\_

RECOMMENDED FOR APPROVAL \_\_\_\_\_ DATE \_\_\_\_\_



8415 East 56th Street  
Indianapolis, Indiana 46216

PLANS PREPARED BY: USI Consultants, Inc. 317-544-4996  
PHONE NUMBER

CERTIFIED BY: \_\_\_\_\_ DATE \_\_\_\_\_

APPROVED FOR LETTING: \_\_\_\_\_ INDIANA DEPARTMENT OF TRANSPORTATION DATE \_\_\_\_\_

BRIDGE NO.	FRANKLIN COUNTY BRIDGE 31
PROJECT NO.	1703013
SHEETS	1 of 35
CONTRACT	PROJECT NO.
B-4892	1703013

**UTILITIES**

**FRONTIER**  
 2401 Chicago Street  
 Valparaiso, IN 46383  
 Contact: Chuck Mckean  
 Phone: (219)-531-6947  
 Cell: (219)-476-5109  
 Email: chuck.mckean@ftr.com

**RSE PROPANE**  
 Contact: Jim Draper  
 Email: jdraper@rse.coop

**RUSHSHLEBY ENERGY**  
 P.O. Box 55  
 Marilla, IN 46150  
 Contact: Warren Shuppert  
 Phone: (765)-544-2600  
 Cell: (765)-544-2964  
 Email: wshuppert@RSE.coop

**NAPOLEON COMMUNITY RURAL WATER CORP.**  
 P.O. Box 107  
 Napoleon, IN 47034  
 Contact: Gene Eaton  
 Phone: (812)-652-4374  
 Cell: (812)-498-7544  
 Email: naph2o2@etzone.com



**1-800-382-5544  
 CALL BEFORE YOU DIG**

**CAUTION !!**

THE LOCATIONS OF ALL EXISTING UNDERGROUND UTILITIES SHOWN ON THIS PLAN ARE BASED UPON ABOVE GROUND EVIDENCE (including, but not limited to, manholes, inlets, valves, and marks made upon the ground by others) AND ARE SPECULATIVE IN NATURE. THERE MAY ALSO BE OTHER EXISTING UNDERGROUND UTILITIES FOR WHICH THERE IS NO ABOVE GROUND EVIDENCE OR FOR WHICH NO ABOVE GROUND EVIDENCE WAS OBSERVED. THE EXACT LOCATIONS OF SAID EXISTING UNDERGROUND UTILITIES SHALL BE VERIFIED BY THE CONTRACTOR PRIOR TO ANY AND ALL CONSTRUCTION.

**INDEX**

SHEET NO.	DESCRIPTION
1	TITLE SHEET
2	INDEX
3	TYPICAL CROSS SECTIONS
4-5	LOCATION CONTROL ROUTE SURVEY
6-7	DETOUR ROUTE
8-9	PLAN AND PROFILE
10	SOIL BORINGS
11-12	EROSION CONTROL DETAILS
13	LAYOUT
14	GENERAL PLAN
15	ROAD AND BRIDGE SUMMARY
16-35	CROSS SECTIONS

**REVISIONS**

SHEET NO.	DESCRIPTION

**NOT FOR CONSTRUCTION**

DESIGNED: <u>  </u> DJG	DRAWN: <u>  </u> BDC
CHECKED: <u>  </u> BMA	CHECKED: <u>  </u> DJG

**INDIANA DEPARTMENT OF TRANSPORTATION**

**INDEX**

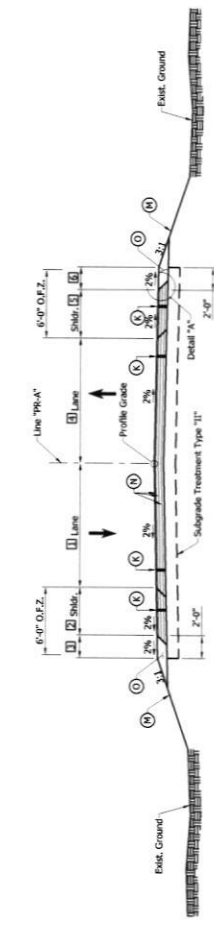
HORIZONTAL SCALE	BRIDGE FILE
NONE	FRANKLIN COUNTY BRIDGE 31
VERTICAL SCALE	DESIGNATION
NONE	1703013
SURVEY BOOK	SHEETS
	2 of 35
CONTRACT	PROJECT
B-40892	1703013

**LEGEND**

Note to Reviewer:  
 1. Final Pavement Design  
 2. No. of Layers (if necessary)  
 3. Final Design

- (K) 16S/75yd, OCQA-HMA, 3, 64, Surface, 9.5mm on 48R/75yd, OCQA-HMA, 2, 64, Intermediate, 19.0mm on 48R/75yd, OCQA-HMA, 2, 64, Base, 19.0mm on 48R/75yd, OCQA-HMA, 2, 64, Subgrade Treatment, Type II
- (L) Compacted Aggregate No. 53
- (M) Mulched Seeding "1"
- (N) Tack Coat

O.F.Z. = Obstruction Free Zone

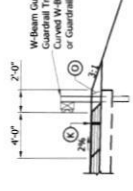


- [1] Varies 9.59' at Sta. 19+75.00 to 10.07' at Sta. 20+75.00 "PR-A"  
 10.07' from Sta. 20+75.00 to Sta. 23+75.00 "PR-A"  
 10.07' from Sta. 23+75.00 to Sta. 27+75.00 "PR-A"  
 Varies 10.07' at Sta. 29+00.00 to 10.07' at Sta. 30+00.00 "PR-A"
- [2] Varies 0.00' at Sta. 23+50.00 to 4.00' at Sta. 24+00.00 "PR-A"  
 4.00' from Sta. 24+00.00 to Sta. 25+51.00 "PR-A"  
 Varies 4.00' at Sta. 26+51.00 to 0.00' at Sta. 27+01.00 "PR-A"
- [3] Varies 1.00' at Sta. 19+75.00 to 2.00' at Sta. 20+75.00 "PR-A"  
 2.00' from Sta. 20+75.00 to Sta. 22+50.00 "PR-A"  
 2.00' from Sta. 22+50.00 to Sta. 24+00.00 "PR-A"  
 Varies 4.00' at Sta. 24+00.00 to 2.00' at Sta. 24+32.00 "PR-A"  
 2.00' from Sta. 24+32.00 to Sta. 23+95.79 "PR-A"  
 2.00' from Sta. 23+95.79 to Sta. 26+15.00 "PR-A"  
 2.00' from Sta. 26+15.00 to Sta. 27+40.58 "PR-A"  
 Varies 4.00' at Sta. 27+40.58 to 2.00' at Sta. 27+41.00 "PR-A"  
 2.00' from Sta. 27+41.00 to Sta. 27+40.58 "PR-A"  
 2.00' from Sta. 29+00.00 to 1.00' at Sta. 30+00.00 "PR-A"

**TYPICAL SECTION - LINE "PR-A"**

Scale: 1" = 5'

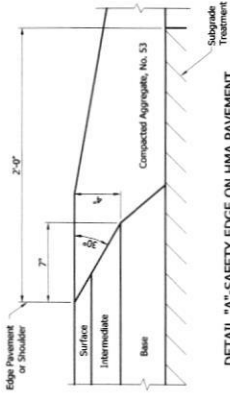
- Sta. 19+75.00 to Sta. 23+75.00 "PR-A"
- Sta. 26+06.34 to Sta. 30+00.00 "PR-A"



**GUARDRAIL TYPICAL SECTION - LINE "PR-A"**

Scale: 1" = 3'

- Sta. 23+00.00 to Sta. 23+75.00 "PR-A", RL
- Sta. 23+83.48 to Sta. 23+75.00 "PR-A", LL
- Sta. 26+04.13 to Sta. 26+50.43 "PR-A", RL
- Sta. 26+04.13 to Sta. 26+79.38 "PR-A", LL



**DETAIL "A" - SAFETY EDGE ON HMA PAVEMENT**

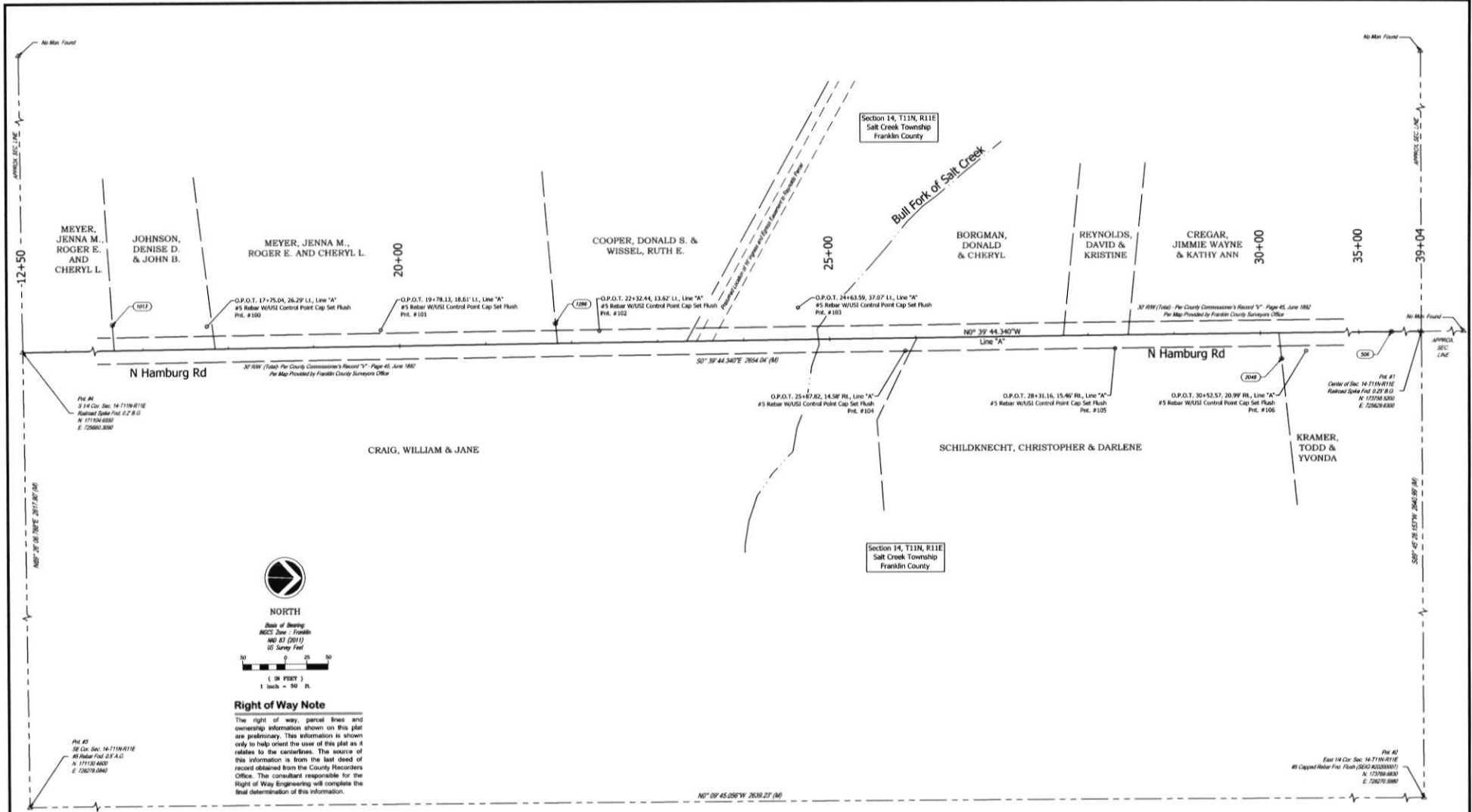
No. 53

**NOT FOR CONSTRUCTION**

INDIANA  
 DEPARTMENT OF TRANSPORTATION  
 TYPICAL CROSS SECTIONS

DESIGNED: _____	DWG: _____	BY: _____	DATE: _____
CHECKED: _____	BY: _____	CHECKED: _____	DATE: _____

PROJECT FILE	BRIDGE FILE
FAMMINT COUNTY BRIDGE 13	
VERTICAL SCALE	HORIZONTAL SCALE
1" = 5'	1" = 5'
SHEET NO.	SHEETS
3	of 35
CONTRACT	PROJECT
B-5892	170013



SURVEY STARTED	3/23/2020
SURVEY COMPLETED	3/13/2020
ROUTE PLAT SHEETS	1 OF 2

2020000837  
Recorded 3/4/2020

**SURVEYOR STATEMENT**  
This survey, to the best of my knowledge and belief, is executed according to the provisions of Title 865 IAC, 1-12-20 through 1-12-26 regarding Route Surveys, except that any data shown regarding the location or description of the existing parcels is not a part of this survey.



**AFFIRMATION STATEMENT**  
I affirm, under the penalties for perjury, that I have taken reasonable care to reflect each Social Security number in this document, unless required by law. By Mark A. Schepers  
RECOMMENDED FOR APPROVAL AND PREPARED BY:  
SIGNATURE: *M.A.S.* DATE: 3/2/2020  
MARK A. SCHEPERS, PS



**NORTH HAMBURG ROAD OVER BULL FORK OF SALT CREEK BRIDGE REPLACEMENT**  
LOCATION CONTROL ROUTE SURVEY

HORIZONTAL SCALE	1" = 50'
COUNTY	FRANKLIN
SURVEY BOOK	1703013
CONTRACT	E-6092
BRIDGE FILE	FRANKLIN COUNTY BRIDGE 31
DESIGNATION	1703013
PLAN SHEETS	4 OF 35
PROJECT	1703013

LSI # 2018-1152